

NOTE: IF FIBERGLASS PANELS ARE USED INSTEAD OF FILM, FASTEN TO PURLINS W/ RING SHANK ALUM. NAILS WITH NEOPRENE WASHERS. 2"x3 1/4" BRACE, NAIL TO POST & UPPER CHORD W/ GALV. NAILS 3/4"x 3/4" STOP FOR VENT. 4'x4' POST 6'-0" O.C. BENCH TOP. ACME TUBE MODEL DA 18" DIA. W/ RC 1B E 6 FAN JET 3120 C.F.M., 120,000 BTU. HEATER. 3" B-GRADE CRUSHED STONE. 6" COARSE GRAVEL. EARTH.

NOTE: CARRY FOOTINGS BELOW FROST LINE. WIND BRACE 3/4"x1" STRAP EACH SIDE OF COL. & TRUSS (FIELD WELD IN PLACE). 2" GALV. STEEL PIPE 6'-0" O.C. 28'-0". 1/8" DIA. RE-BAR. 6"x6" CONC. PIER.

NOTE: MENTION OF A TRADE NAME DOES NOT CONSTITUTE A GUARANTEE OR WARRANTY OF THE PRODUCT BY THE U.S. DEPARTMENT OF AGRICULTURE OR AN ENDORSEMENT BY THE DEPARTMENT OVER OTHER PRODUCTS NOT MENTIONED.

NOTE: CONSULT LOCAL HEALTH AND BUILDING CODE AUTHORITIES BEFORE STARTING CONSTRUCTION.

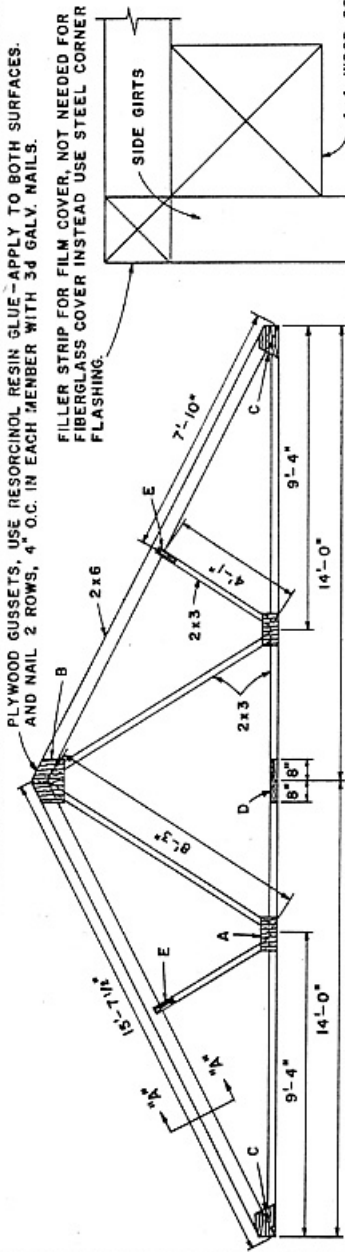
BASED ON: PENNA. STATE UNIV. PLAN NO. 822-349

COOPERATIVE EXTENSION WORK IN AGRICULTURE AND HOME ECONOMICS
STATE OF TENNESSEE
UNIVERSITY OF TENNESSEE
UNITED STATES DEPARTMENT OF AGRICULTURE COOPERATING

28' GREENHOUSE

PA. '74 6185 SHEET 1 OF 3
AGRICULTURAL ENGINEERING DEPARTMENT

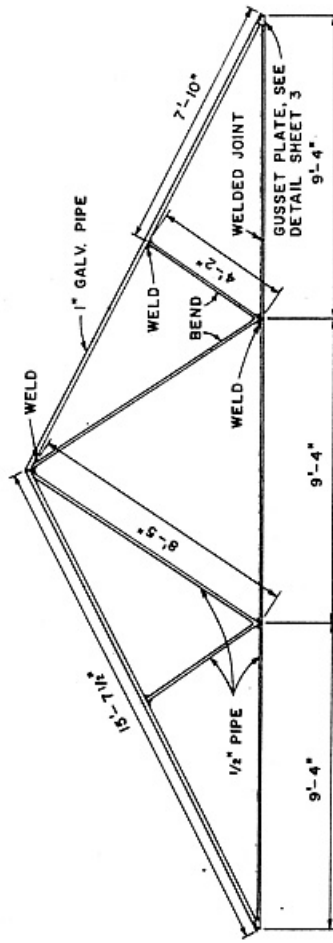
PLYWOOD GUSSETS, USE RESORCINOL RESIN GLUE - APPLY TO BOTH SURFACES.
AND NAIL 2 ROWS, 4" O.C. IN EACH MEMBER WITH 3d GALV. NAILS.



USE 1500+ GRADE DOUGLAS FIR, WESTERN HEMLOCK, SOUTHERN YELLOW PINE OR EQUIVALENT.

WOOD TRUSS LAYOUT

SCALE: $\frac{3}{8}$ " = 1'-0" $\frac{1}{2}$ " = 2'-0"

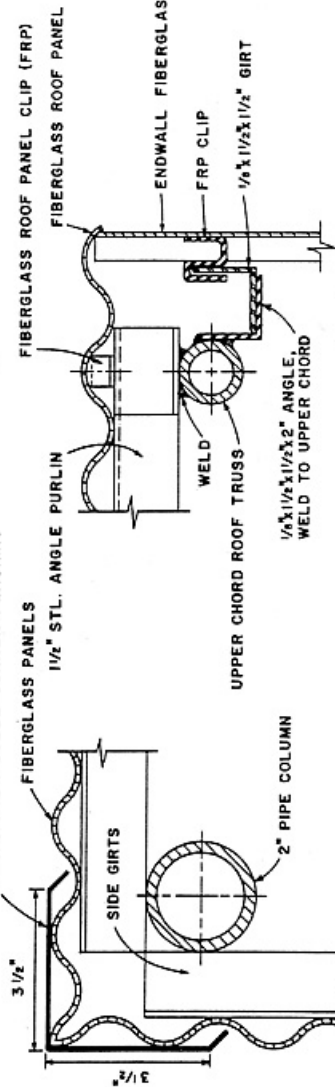


PIPE TRUSS LAYOUT

WELDED CONSTRUCTION

SCALE: $\frac{3}{8}$ " = 1'-0" $\frac{1}{2}$ " = 2'-0"

22 GA. GALV. STEEL CORNER FLASHING

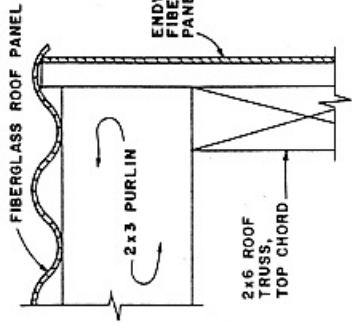


CORNER DETAIL

STEEL CONSTRUCTION

SECTION "A-A"

STEEL CONSTRUCTION

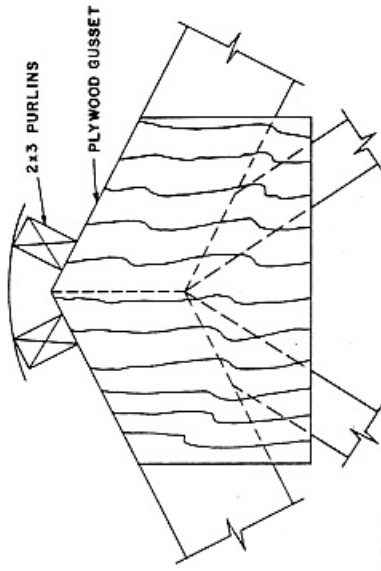


SECTION "A-A"

WOOD CONSTRUCTION

CORNER DETAIL

WOOD CONSTRUCTION



RIDGE DETAIL

WOOD CONSTRUCTION

SCALE: $\frac{3}{8}$ " = 1'-0" $\frac{1}{2}$ " = 2'-0"

$\frac{3}{8}$ " = 1'-0" $\frac{1}{2}$ " = 2'-0"

SCALE: $\frac{6}{16}$ " = 1'-0" UNLESS OTHERWISE NOTED

$\frac{6}{16}$ " = 1'-0" UNLESS OTHERWISE NOTED

$\frac{6}{16}$ " = 1'-0" UNLESS OTHERWISE NOTED

COOPERATIVE EXTENSION WORK IN
AGRICULTURE AND HOME ECONOMICS
STATE OF TENNESSEE
UNIVERSITY OF TENNESSEE
AND
UNITED STATES DEPARTMENT OF AGRICULTURE COOPERATING

28' GREENHOUSE

PA. '74 6185 SHEET 2 OF 3

AGRICULTURAL ENGINEERING DEPARTMENT

